

# UNITED PIPELINE SYSTEMS

*Product and service offerings*



# PRODUCT AND SERVICE OFFERINGS

United Pipeline Systems has installed over 20,000 miles of Tite Liner® and Safetyliner™ in more than 30 countries worldwide. United's products ranges in diameter from 2 to 52 inches with operating pressures up to 7,500 psi.

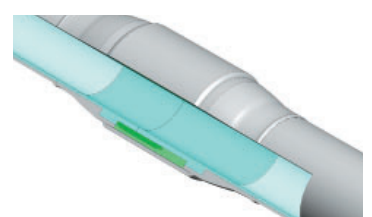
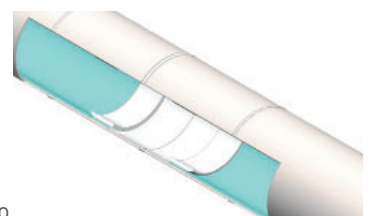
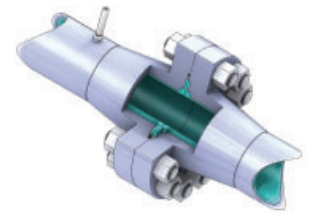
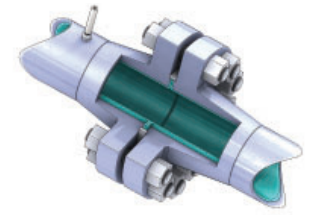
## Liner Systems

- **Tite Liner®**  
An engineered compressed fit thermoplastic liner system for the prevention of internal corrosion
- **Safetyliner™**  
Our Tite Liner® system with external grooves allowing for the management of gas permeation
- **Tite Liner® RT**  
Tite Liner® RT (raised temperature PE) Our Tite Liner® system utilizing bimodal polyethylene material for service conditions with elevated temperature
- **Tite Liner® HC**  
Tite Liner® HC (PA-12 for hydrocarbon service) - Our Tite Liner® system utilizing ultra high-performance polymer material for hydrocarbon service and/or elevated temperature
- **Lined Fittings**  
Shop applied lining of fittings, bends and other metallic structures



## Liner Connections

- **Tite Liner® Flange Connection**  
Standard raised face weld neck flange with engineer spacer ring
- **Slurry Flange™ Connection**  
Unique flange connection for use in slurry and non-slurry pipelines
- **WeldTite™ CRA Welded Connection**  
Allows for the connection of two thermoplastic lined sections of pipe without the use of flanges
- **WeldTite™ EF Welded Connection**  
Allows for the connection of two thermoplastic lined sections of pipe without the use of flanges



## Integrity Management

- **Monitoring/Venting System** Allows for the capture and anagement of permeated gas
- **Gas Reinjection System**  
Allows for the capture and inline reinjection of permeated gas
- **Integrity Monitoring & Maintenance Program**  
Monitoring and maintenance programs are available from United



United Pipeline Systems, Inc.  
135 Turner Drive  
Durango, CO 81303  
970.259.0354  
www.unitedpipeline.com